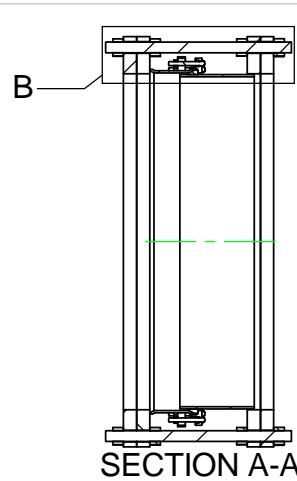
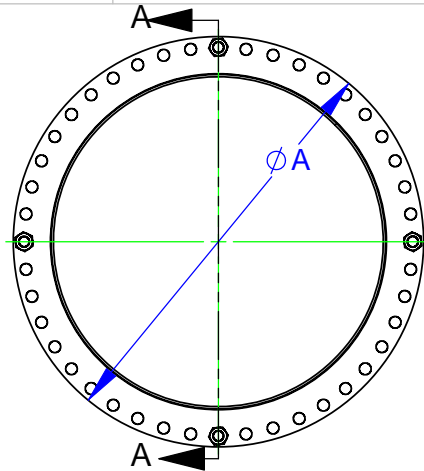


B3239-A



THESE FLANGES NOT INCLUDED WITH PRODUCT

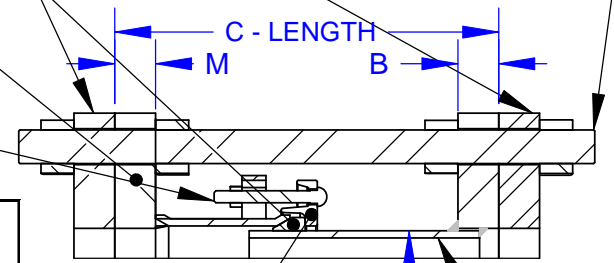
GASKET: NBR, SUITABLE FOR WATER SERVICE, 180°F max, 75 DUROMETER 1 REQ'D

ISO 7005 PN-16 RING FLANGE, 2 REQ'D

BOLTS, "D" REQ'D 5/8"-11 UNC X "E" LG; TRACK HEAD

REVISIONS			
REV.	DESCRIPTION	DATE	APPROVED
0	INITIAL RELEASE	7/15/09	SH
1	ADDED WEIGHTS, REVISED LENGTHS	11/12/09	SH

TIE RODS, "F" X "G" LENGTH, "H" REQ'D, ASTM A193 GR. B7 OR SS GR B8



FLANGED SPOOL END: "J" OD, SPOOL MAT'L: ASTM A36 OR ASTM A53 PIPE

DETAIL B

NOM SIZE	DIMENSIONS (MM)					BOLTS		TIE RODS				SPOOL		APPROX. WEIGHT	
	FLG OD	FLG THK	C - LENGTH			QTY	LENGTH (IN)	SIZE	LENGTH	B7 QTY	SS QTY	OD	FLG THK		
	A	B	NOM.	MIN.	MAX.	D	E	F	G	H	H	J	M	LB	KG
100	220	22	324	286	362	4	5.0	M16	465	2	2	114.3	22	56	25
150	285	24	330	292	368	4	5.0	M20	485	2	2	168.3	24	85	39
200	340	26	337	298	375	5	5.0	M20	500	2	2	219.1	26	112	51
250	405	28	343	305	381	6	5.0	M24	515	2	2	273.1	28	168	76
300	460	32	349	311	387	8	5.0	M24	530	2	2	323.9	32	223	101
350	520	35	438	400	476	8	5.0	M24	625	2	4	355.6	35	191	87
400	580	38	445	406	483	10	5.0	M27	645	2	4	406.4	38	295	134
450	640	42	451	413	489	10	5.0	M27	655	4	4	457.2	42	373	169
500	715	46	464	425	502	12	5.0	M30	680	4	4	508.0	46	480	218
600	840	52	527	489	565	14	5.0	M33	765	4	4	609.6	52	684	311
700	910	60	546	508	584	16	5.0	M33	805	4	6	711.2	60	763	346
800	1025	68	578	540	616	16	5.0	M36	855	4	6	812.8	68	1010	459
900	1125	76	591	552	629	18	5.0	M36	885	6	8	914.4	76	1245	565
1000	1255	84	610	572	648	20	5.0	M39	925	6	8	1016.0	84	1784	810
1200	1485	98	660	622	699	22	6.0	M45	1020	6	8	1219.2	98	2601	1181
1400	1685	145	705	667	743	24	6.0	M45	1150	6	10	1371.6	145	2284	1037
1500	1820	153	724	686	762	28	6.0	M52	1205	6	10	1524.0	153	3006	1365
1600	1930	160	743	705	781	28	6.0	M52	1235	6	10	1524.0	160	3317	1506
1800	2130	170	762	724	800	32	6.0	M52	1270	8	12	1828.8	170	4066	1846

NOTES:

1. COATING: FUSION BONDED EPOXY IS STANDARD. OTHER COATINGS AVAILABLE.
2. FASTENERS: HSLA. STAINLESS STEEL IS OPTIONAL.
3. PRESSURE RATED UP TO PN-16 FLANGES PROVIDED. (235.2 PSI)
4. WHEN INSTALLING, POSITION THE FLANGED COUPLING END IN THE REQUIRED LOCATION & THEN FOLLOW BOLTING INSTRUCTIONS.
5. NOT INTENDED TO PROVIDE LATERAL MOVEMENT IN PIPELINE.

<p>PROPRIETARY NOTICE</p> <p>THIS DRAWING CONTAINS CONFIDENTIAL PROPRIETARY INFORMATION AND IS THE PROPERTY OF ROMAC IND., INC. IT IS TO BE USED ONLY FOR THE PURPOSE FOR WHICH IS WAS SUBMITTED AND SHALL NOT HAVE IT'S INFORMATION DISCLOSED OR REPRODUCED IN WHOLE OR IN PART FOR ANY PURPOSE WITHOUT PRIOR WRITTEN PERMISSION OF ROMAC IND., INC.</p>	<p>UNLESS OTHERWISE SPECIFIED</p> <p>DIMENSIONS ARE IN INCHES</p> <p>TOLERANCES ARE ON: 1 PL DECIMALS ± .060 2 PL DECIMALS ± .030 3 PL DECIMALS ± .010 ANGLES ± 1° FRACTIONS ± 1/64</p>	<p>SIGNATURES</p> <p>DRAWN</p> <p>CHECKED</p> <p>APPROVAL ORGANIZATIONS PROP.CUST.APP. ORG.</p>
	<p>ROMAC INDUSTRIES INC., BOTHELL, WA</p> <p>TITLE DJ400 - 100MM - 1800MM, ISO 7005 PN 16 FLANGE</p>	

DWG. NO.	SIZE	REV. NO.	SCALE	SHEET
B3239-A	A	1	NTS	1 OF 1