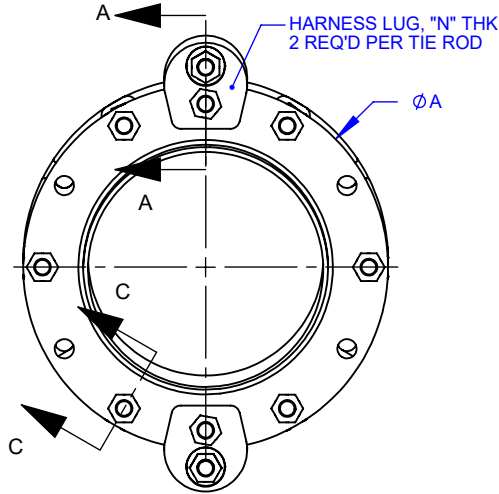


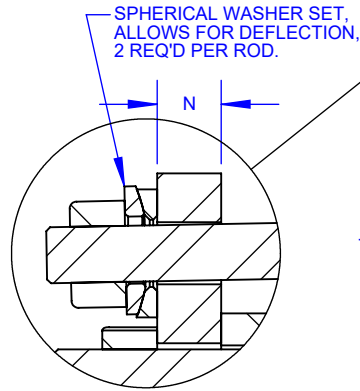
NOTES:

1. MATERIAL: ASTM A36 STEEL OR EQUIV. UNLESS OTHERWISE SPECIFIED.
2. FASTENERS: HSLA PER ASTM A588 IS STANDARD. STAINLESS STEEL TYPE 304 OR 316 PER ASTM A193 IS AVAILABLE ON REQUEST.
3. COATING: NSF61 CERTIFIED FUSION BONDED EPOXY LINED AND COATED IS STANDARD.
4. TEST PRESSURE: 1.5X WORKING PRESSURE.
5. ACCOMMODATES DEFLECTION AND/OR OFFSET IN A SYSTEM PROVIDING A SOLID CONNECTION AFTER INSTALLATION.
6. NOT INTENDED TO PROVIDE LATERAL MOVEMENT IN PIPELINE.
7. FCA FLANGES SUITABLE FOR CLASS E PRESSURE RATING, SEE TABLE FOR APPROPRIATE TIE-ROD QTY. FOR UNIT RATING.

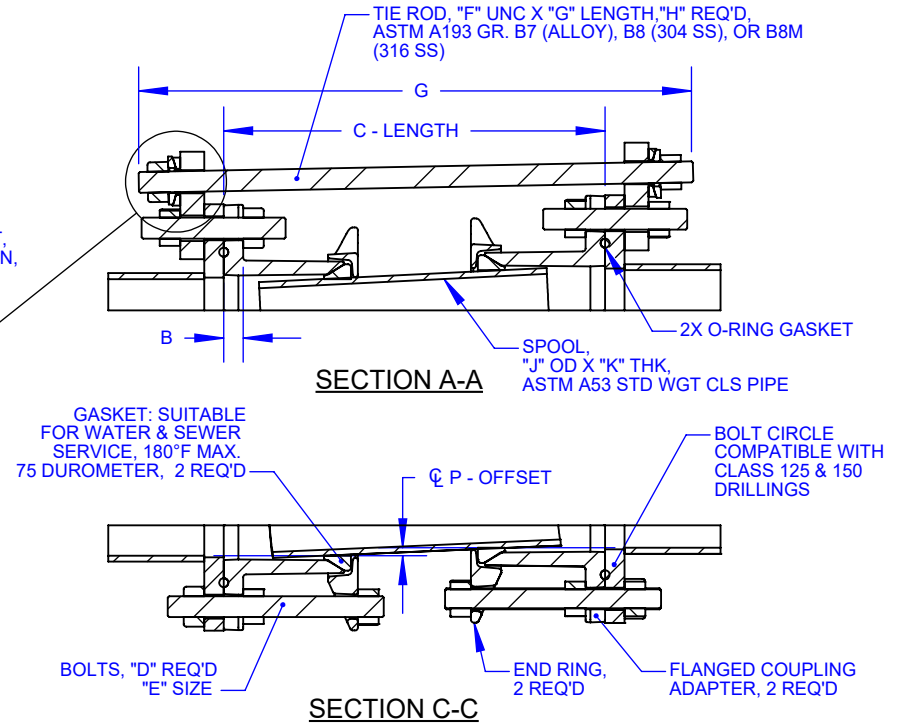
REVISIONS			
REV.	DESCRIPTION	DATE	EDITOR
R0	INITIAL RELEASE, SUPERSEDES DWG B2340-A (02/26/04)	10/26/21	MSL



FRONT VIEW



DETAIL B



SECTION A-A

SECTION C-C

NOM SIZE	DIMENSIONS					BOLTS		TIE RODS				SPOOL		HARNESS LUG THK	OFFSET		APPROX WEIGHT
	FLANGE OD	FCA FLANGE THK	C - LENGTH			QTY	SIZE	SIZE	LENGTH	175 PSI (CLS D) QTY	275 PSI (CLS E) QTY	OD	THK		AT MIN. LENGTH	AT MAX. LENGTH	
			A	B	NOM.									MIN.			MAX.
3	7.50	0.60	16.50	15.50	17.50	4	5/8 - 11	5/8	23.38	2	2	3.50	0.22	0.50	0.25	0.32	49
4	9.00	0.60	16.50	15.50	17.50	8	5/8 - 11	5/8	23.75	2	2	4.50	0.24	0.50	0.26	0.33	58
6	11.00	0.63	16.63	15.63	17.63	8	3/4 - 10	5/8	24.88	2	2	6.63	0.28	0.75	0.25	0.32	92
8	13.50	0.63	16.63	15.63	17.63	8	3/4 - 10	5/8	25.25	2	3	8.63	0.32	0.75	0.26	0.33	122
10	16.00	1.24	19.25	18.25	20.25	12	5/8-11 X 7/8-9	3/4	28.75	2	3	10.75	0.37	1.00	0.32	0.39	204
12	19.00	1.25	19.50	18.50	20.50	12	7/8 - 9	7/8	29.63	2	4	12.75	0.38	1.00	0.33	0.40	268

PROPRIETARY NOTICE

THIS DRAWING CONTAINS CONFIDENTIAL PROPRIETARY INFORMATION AND IS THE PROPERTY OF ROMAC IND., INC. IT IS TO BE USED ONLY FOR THE PURPOSE FOR WHICH IT WAS SUBMITTED AND SHALL NOT HAVE ITS INFORMATION DISCLOSED OR REPRODUCED IN WHOLE OR IN PART FOR ANY PURPOSE WITHOUT PRIOR WRITTEN PERMISSION OF ROMAC IND., INC.

UNLESS OTHERWISE SPECIFIED

- DIMENSIONS ARE IN INCHES
- DRAWING NOT TO SCALE.

SIGNATURES

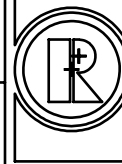
DRAWN
Mike Lundquist

APPROVED
Sam Hill

DATE

10/26/2021

10/26/2021



ROMAC INDUSTRIES INC.

TITLE
EQUIPMENT CONNECTION FITTING, ECF400 3" - 12", 175 PSI (CLS D) & 275 PSI (CLS E)

DWG. NO. CAD-064832	SIZE A	REV. NO. R0	SCALE NTS	SHEET 1 OF 1
------------------------	-----------	----------------	--------------	-----------------

MODEL NAME: ECF-ECF ASSEMBLY
MODEL CAD #: CAD-015691

CONFIGURATION NAME: offset

THIRD ANGLE
PROJECTION



LEGACY DRAWING #:
DRAWING FILE NAME:
ECF400 - 3-12 INCH - CLASS D & E - CUSTOMER DRAWING

AUTHOR: Niels Thogersen

FOR CUSTOMER USE

RELEASED