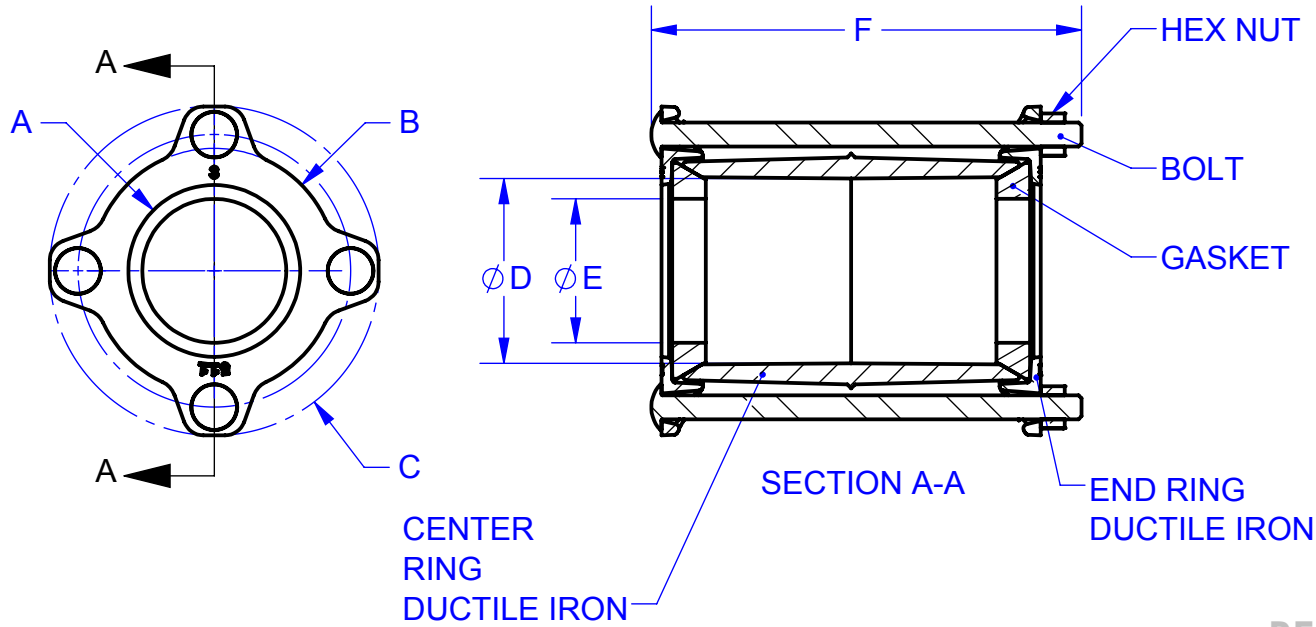
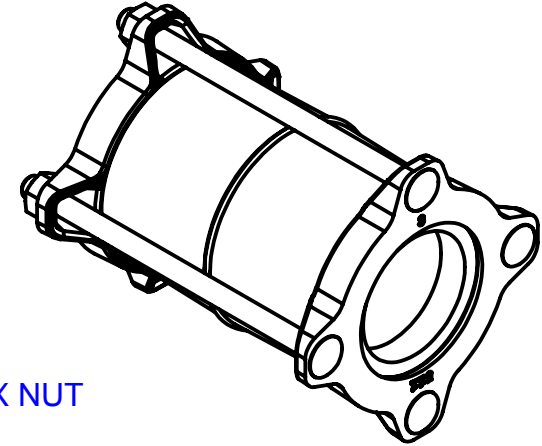


NOMINAL SIZE	GASKET	A	B	C	D	E	F	G	BOLTS	
									NO	LENGTH
3	3.00	3.58	5.10	6.84	3.90	3.04	6.50	4.00	4	1/2" X 6"
	3.13					9.50	7.00	1/2" X 9"		
	3.50					3.53				
4	4.00	4.60	5.76	7.76	4.75	4.10	6.50	4.00	4	1/2" X 6"
	4.50					9.50	7.00	1/2" X 9"		
5	5.56	5.66	6.72	8.85	5.88	5.57	7.00	4.00	4	1/2" X 6 1/2"
6	6.00	6.74	6.94	9.84	6.88	5.95	6.50	4.00	4	1/2" X 6"
	6.63					9.50	7.00	1/2" X 9"		
8	8.00	8.70	9.86	12.98	9.00	8.13	7.50	5.00	5	1/2" X 7"
	8.63					9.50	7.00	1/2" X 9"		
10	10.00	10.90	12.26	14.28	11.00	10.13	8.50	5.00	6	5/8" X 8"
	10.75					10.89	11.00	7.00		5/8" X 10 1/2"
12	12.00	12.90	14.20	16.26	12.88	12.15	8.50	5.00	8	5/8" X 8"
	12.75					12.86	11.00	7.00		5/8" X 10 1/2"

REVISIONS				
REV.	ZONE	DESCRIPTION	DATE	EDITOR
R0		INITIAL RELEASE	03/20/18	D.RICHARDSON



NOTES:

1. WORKING PRESSURE 200 PSI. TEST PRESSURE 250 PSI
2. GASKETS: SBR COMPOUNDED FOR WATER AND SEWER. OTHER COMPOUNDS AVAILABLE ON REQUEST.
3. FASTENERS: 3" - 8" - GALVANIZED MILD STEEL BOLTS AND HEAVY HEX NUTS. 10" - 12" - HSLA TRACKHEAD BOLTS AND HEAVY HEX NUTS.
4. COATING: SHOP COAT. OTHER COATINGS AVAILABLE ON REQUEST.

RELEASED

FOR CUSTOMER USE

<p>PROPRIETARY NOTICE</p> <p>THIS DRAWING CONTAINS CONFIDENTIAL PROPRIETARY INFORMATION AND IS THE PROPERTY OF ROMAC IND., INC. IT IS TO BE USED ONLY FOR THE PURPOSE FOR WHICH IT WAS SUBMITTED AND SHALL NOT HAVE ITS INFORMATION DISCLOSED OR REPRODUCED IN WHOLE OR IN PART FOR ANY PURPOSE WITHOUT PRIOR WRITTEN PERMISSION OF ROMAC IND., INC.</p>		<p>UNLESS OTHERWISE SPECIFIED</p> <ul style="list-style-type: none"> <li>DIMENSIONS ARE IN INCHES</li> <li>TOLERANCES ARE ON:                             <ul style="list-style-type: none"> <li>1 PL DECIMALS ± 0.020</li> <li>2 PL DECIMALS ± 0.010</li> <li>3 PL DECIMALS ± 0.005</li> </ul> </li> <li>ANGLES ± 1°</li> <li>FRACTIONS ± 1/64</li> <li>DIMENSIONS IN ( ) ARE FOR REFERENCE ONLY</li> </ul>		<p>SIGNATURES</p> <p>DRAWN Derek Richardson</p> <p>APPROVED Chris Nichols</p>		<p>DATE</p> <p>03/20/2018</p> <p>3/22/2018</p>				<p>ROMAC INDUSTRIES INC.</p> <p>TITLE</p> <p>511 COUPLING ASSEMBLY - 3" - 12" DUCTILE IRON CENTER RINGS</p>			
<p>MODEL NAME: 511 Customer Assembly 3 in Through 12 in</p> <p>MODEL CAD #: CAD-040507 VERSION:</p>		<p>CONFIGURATION NAME: Default</p>		<p>THIRD ANGLE PROJECTION</p>		<p>LEGACY DRAWING #: 511 Customer Assembly 3 in Through 12 in</p>		<p>DWG. NO. CAD-040498</p> <p>SIZE A</p>		<p>REV. NO. R0</p> <p>SCALE 1:4</p>		<p>SHEET 1 OF 1</p>	