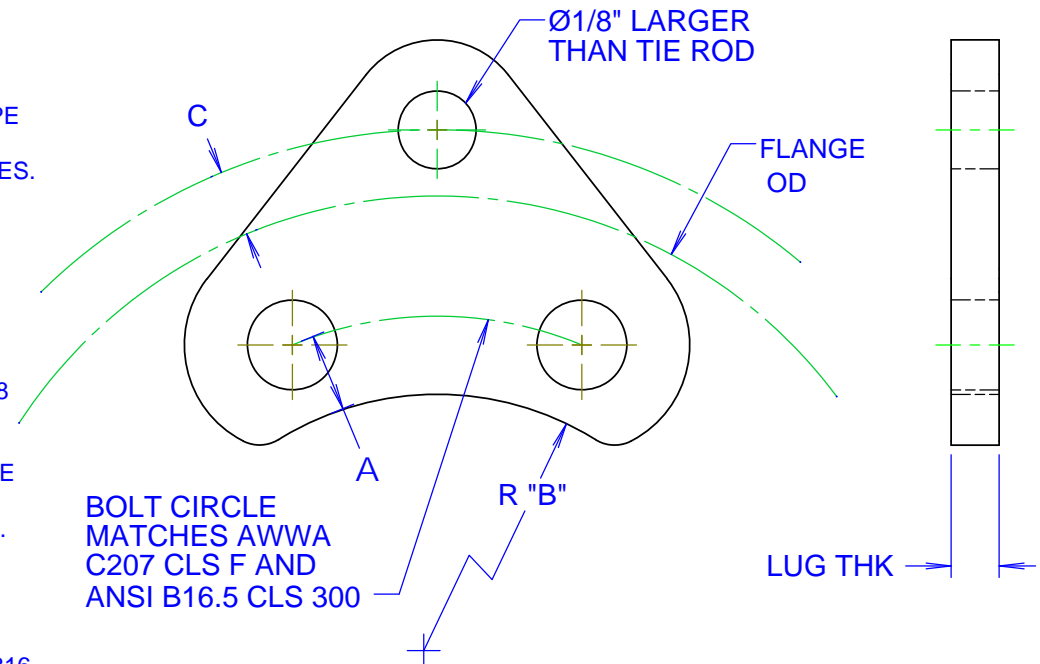


HARNESS LUG SCHEDULE, 300 PSI MAX							
FLANGE SIZE	LUG THK	TIE ROD QUANTITY	TIE ROD SIZE,	A	B	C	WGT, EA
3	1/2	2	5/8	0.86	2.46	0.88	1.5
4	1/2	2	5/8	0.82	3.13	0.88	1.8
6	3/4	2	5/8	1.00	4.31	0.88	2.5
8	3/4	4	5/8	1.13	5.38	0.88	3.1
10	1	4	3/4	1.06	6.56	0.88	4.2
12	1	4	7/8	1.19	7.69	0.94	5.3

REVISIONS			
REV.	DESCRIPTION	DATE	APPROVED
0	INITIAL RELEASE	7/11/2007	DH EATON
1	ADDED NOTE 9 AND 10. WAS B16.5 CLS 150	7/11/2007	DH EATON
2	6 & 8 TIE ROD SIZE WAS 3/4", 10" WAS 7/8"	1/25/2008	N THOGERSEN
3	10" TIE ROD SIZE WAS INCORRECTLY SHOWN AS 3/8	5/12/2008	N. THOGERSEN
4	UPDATED TEMPLATE, COATING OPTIONS AND NOTES	8/20/2013	N THOGERSEN
5	UPDATED NOTES TO CLARIFY ADDITIONAL LUG QUANTITIES ABOVE 300 PSI	1/22/2016	N THOGERSEN

**NOTE:**

- LUG DESIGN ALLOWS MAXIMUM CLEARANCE BETWEEN PIPE OR FLANGE HUB OD AND LUG. CUSTOMER TO VERIFY LUG CLEARANCE OVER FLANGE HUB FOR THREADED DI FLANGES. SEE DIAMETER "B".
- DIMENSION "C" IS FROM OD OF FLANGE TO TIE ROD BOLT CIRCLE.
- EACH TIE ROD REQUIRES 2 LUGS, ONE LOCATED ON THE OUTSIDE OF EACH FLANGED CONNECTION.
- COATING: COATING: BARE, SHOPCOAT PAINT, OR NSF 61 FUSION BONDED EPOXY, BLACK
- MIN. TIE ROD MATERIAL = ASTM A193 B7, (ALLOY STEEL), B8 (304 SS), OR B8M (316 SS)
- PIPE THRUST (LBS) = 0.7854 X PRESSURE X [PIPE OD]<sup>2</sup>
- TIE ROD QUANTITIES LISTED IN TABLE WILL ACCOMMODATE 300 PSI MAX.
- HIGHER PRESSURES WILL REQUIRE ADDITIONAL TIE RODS. QUANTITY = PIPE THRUST / ALLOWABLE LUG THRUST
  - 1/2" THK LUG. 3000 LBS PIPE THRUST.
  - 3/4" THK LUG .6000 LBS PIPE THRUST.
  - 1" LUG. 15000 LBS PIPE THRUST.
- LUG MATERIAL: STEEL A36, STAINLESS A240 TYPE 304 OR 316
- SPECIFY TIE ROD LENGTH WHEN ORDERING. NUTS REQUIRED PER TIE ROD, (DOUBLE NUT CONFIGURATION.) TIE RODS SOLD SEPERATELY, SPECIFY LENGTH WHEN ORDERING.



<p>PROPRIETARY NOTICE</p> <p>THIS DRAWING CONTAINS CONFIDENTIAL PROPRIETARY INFORMATION AND IS THE PROPERTY OF ROMAC IND., INC. IT IS TO BE USED ONLY FOR THE PURPOSE FOR WHICH IT WAS SUBMITTED AND SHALL NOT HAVE ITS INFORMATION DISCLOSED OR REPRODUCED IN WHOLE OR IN PART FOR ANY PURPOSE WITHOUT PRIOR WRITTEN PERMISSION OF ROMAC IND., INC.</p>		<p>UNLESS OTHERWISE SPECIFIED</p> <p>DIMENSIONS ARE IN INCHES</p> <p>TOLERANCES ARE ON:</p> <p>1 PL DECIMALS ± 0.060</p> <p>2 PL DECIMALS ± 0.030</p> <p>3 PL DECIMALS ± 0.010</p> <p>ANGLES ± 1°</p> <p>FRACTIONS ± 1/64</p>		<p>SIGNATURES</p> <p>DRAWN</p> <p>APPROVED</p>		<p>DATE</p>		<p>ROMAC INDUSTRIES INC.</p> <p>TITLE</p> <p>HARNESS LUG, 3" - 12". 3 HOLE</p> <p>AWWA CLS F/ ANSI CLS 300, STYLE 491</p>			
						<p>DWG. NO.</p> <p>B2754-A</p>		<p>SIZE</p> <p>A</p>	<p>REV. NO.</p> <p>5</p>	<p>SCALE</p> <p>NTS</p>	<p>SHEET</p> <p>1 OF 1</p>