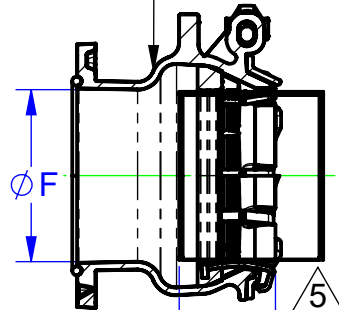


SIZE	PIPE OD RANGE	BODY OD <sup>A</sup>	HEIGHT <sup>A</sup>	LENGTH <sup>A</sup>	FLANGE OD <sup>A</sup>	FLANGE THICKNESS <sup>A</sup>	FLANGE ID <sup>A</sup>	FLANGE HOLE <sup>A</sup>	MAX DEFLECTION (DEGREES)	APPX. WEIGHT (LBS)
		∅A	B	C	∅D	E	∅F	∅G		
4	4.80-5.10	8.1	10.2	8.4	9.0	0.75	5.19	0.75	2	29
6	6.90-7.10	10.4	12.3	8.5	11.0	0.75	7.18	0.88	2	40
8	9.05-9.40	13.4	15.0	10.1	13.5	0.75	9.29	0.88	2	57
10	11.10-11.45	15.5	17.3	10.4	16.0	0.75	11.54	1.00	2	82
12	13.20-13.60	17.5	19.9	10.9	19.0	0.81	∅13.69	1.00	2	105

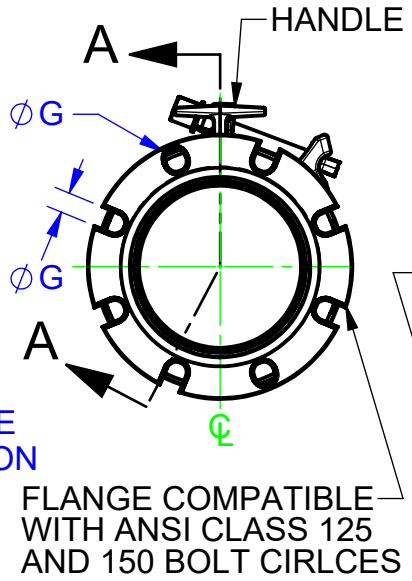
REVISIONS			
REV.	DESCRIPTION	DATE	EDITOR
R2	A	DIMENSIONS UPDATED	7/27/21 CMB

BODY, (NSF 61 FUSION BONDED EPOXY)



MIN PIPE INSERTION

SECTION A-A



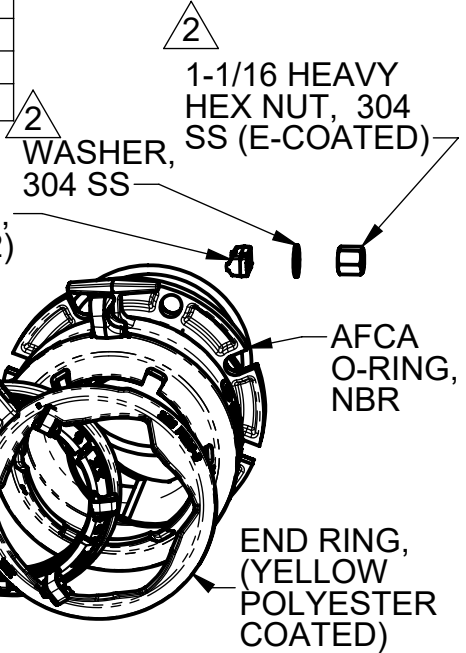
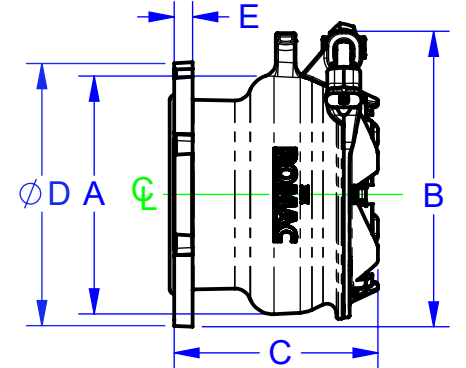
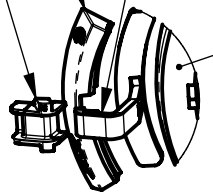
RAMP RUNNER, REINFORCED NYLON 66

GRIPPERS, (XYLAN 1424 COATED)

DRAW HOOK, 304L SS

GASKET, NSF 61, NBR

DETAIL B  
SCALE 1 : 4



NOTES:

1. ALL MATERIALS ASTM A536 GRADE 65-45-12 DUCTILE IRON UNLESS OTHERWISE SPECIFIED.
2. FASTENER MATERIAL: TYPE 304 STAINLESS STEEL, 316 AVAILABLE UPON REQUEST.
3. BOLT GUIDE COATED BLACK XYLAN 1212. E-COAT AVAILABLE UPON REQUEST.
4. 4-12 SIZES PRESSURE RATING IS 350 PSI.
5. SEE INSTALL INSTRUCTIONS FOR MINIMUM PIPE INSERTION DEPTH

FOR CUSTOMER USE

A

B

RELEASED

<p>PROPRIETARY NOTICE</p> <p>THIS DRAWING CONTAINS CONFIDENTIAL PROPRIETARY INFORMATION AND IS THE PROPERTY OF ROMAC IND., INC. IT IS TO BE USED ONLY FOR THE PURPOSE FOR WHICH IT WAS SUBMITTED AND SHALL NOT HAVE ITS INFORMATION DISCLOSED OR REPRODUCED IN WHOLE OR IN PART FOR ANY PURPOSE WITHOUT PRIOR WRITTEN PERMISSION OF ROMAC IND., INC.</p>		<p>UNLESS OTHERWISE SPECIFIED</p> <ul style="list-style-type: none"> <li>DIMENSIONS ARE IN INCHES</li> <li>DRAWING NOT PERFECTLY TO SCALE</li> </ul>		<p>SIGNATURES</p> <p>DRAWN Caitlin Boone</p> <p>APPROVED James Protzeller</p>		<p>DATE</p> <p>07/27/2021</p> <p>7/27/2021</p>				<p>ROMAC INDUSTRIES INC.</p> <p>TITLE ALPHA FLANGE COUPLING ADAPTER, 4-12 INCH, XL</p>			
<p>MODEL NAME: ALPHA, FLANGE COUPLING ADAPTER, ASSEMBLY, 4 INCH, XL MODEL CAD #: CAD-045790</p>		<p>CONFIGURATION NAME: Default</p>		<p>THIRD ANGLE PROJECTION</p>		<p>LEGACY DRAWING #: DRAWING FILE NAME: ALPHA, FLANGE COUPLING ADAPTER, 4-12 INCH, XL</p>		<p>AUTHOR: Tyler Matthews</p>					
<p>DWG. NO. CAD-045685</p>		<p>SIZE A</p>	<p>REV. NO. R2</p>	<p>SCALE 1:8</p>	<p>SHEET 1 OF 1</p>								