

TRAVEL CHART

4" SIZE

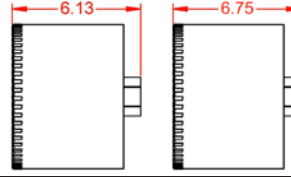
| PIPE TYPE | O.D. NOM | SLEEVE SIZE | PIPE I.D. | CUTTER(S) | CUTTER I.D. | CUTTER TRAVEL | REAMER TRAVEL | VALVE ROTATE | VALVE SET |
|---------------------------|----------|----------------------|-----------|-------------|-------------|------------------|------------------|--------------|-----------|
| PC 350, D.I. 50 | 4.80 | 4.70-4.90 | 4.22 | 4.275 | 3.85 | 8" + 0.75 TURN | 7" + 3.75 TURNS | 4" | 6" |
| D.I. 51 | 4.80 | 4.70-4.90 | 4.22 | 4.275 | 3.85 | 8" + 0.75 TURN | 7" + 3.75 TURNS | 4" | 6" |
| D.I. 52 | 4.80 | 4.70-4.90 | 4.16 | 4.275 | 3.85 | 8" + 0.75 TURN | 7" + 3.75 TURNS | 4" | 6" |
| D.I. 53 | 4.80 | 4.70-4.90 | 4.10 | 4.275 | 3.85 | 8" + 0.75 TURN | 7" + 3.75 TURNS | 4" | 6" |
| D.I. 54 | 4.80 | 4.70-4.90 | 4.04 | 4.275 | 3.85 | 8" + 0.75 TURN | 7" + 3.75 TURNS | 4" | 6" |
| D.I. 55 | 4.80 | 4.70-4.90 | 3.98 | 4.00, 4.275 | 3.57, 3.85 | 8" + 0.75 TURN | 7" + 3.75 TURNS | 4" | 6" |
| D.I. 56 | 4.80 | 4.70-4.90 | 3.92 | 4.00, 4.275 | 3.57, 3.85 | 8" + 0.75 TURN | 7" + 3.75 TURNS | 4" | 6" |
| C900 PC165 (DR25, PC100) | 4.80 | 4.70-4.90 | 4.36 | 4.275 | 3.85 | 8" + 0.75 TURN | 7" + 3.75 TURNS | 4" | 6" |
| C900 PC235 (DR18, PC150) | 4.80 | 4.70-4.90 | 4.19 | 4.275 | 3.85 | 8" + 0.75 TURN | 7" + 3.75 TURNS | 4" | 6" |
| C900 PC305 (DR14, PC 200) | 4.80 | 4.70-4.90 | 4.02 | 4.275 | 3.85 | 8" + 0.75 TURN | 7" + 3.75 TURNS | 4" | 6" |
| C.I. 50-250 PC | 4.80 | 4.70-4.90 | 4.10 | 4.275 | 3.85 | 8" + 2 TURNS | 7" + 5 TURNS | 4" | 6" |
| C.I. 50-250 PC | 4.80 | 4.70-4.90 | 4.00 | 4.00, 4.275 | 3.57, 3.85 | 8" + 2 TURNS | 7" + 5 TURNS | 4" | 6" |
| C.I. A | 4.80 | 4.70-4.90 | 3.96 | 4.00, 4.275 | 3.57, 3.85 | 8" + 2 TURNS | 7" + 5 TURNS | 4" | 6" |
| C.I. B | 5.00 | 4.92-5.10 | 4.10 | 4.275 | 3.85 | 8" + 2 TURNS | 7" + 5 TURNS | 4" | 6" |
| C.I. C | 5.00 | 4.92-5.10 | 4.04 | 4.275 | 3.85 | 8" + 2 TURNS | 7" + 5 TURNS | 4" | 6" |
| C.I. D | 5.00 | 4.92-5.10 | 3.96 | 4.00, 4.275 | 3.57, 3.85 | 8" + 2 TURNS | 7" + 5 TURNS | 4" | 6" |
| A.C. 100 | 4.92 | 4.91-5.10, 5.11-5.30 | 4.00 | 4.00, 4.275 | 3.57, 3.85 | 8" + 1.5 TURNS | 7" + 4.5 TURNS | 4" | 6" |
| A.C. 150 | 5.07 | 4.91-5.10, 5.11-5.30 | 4.00 | 4.00, 4.275 | 3.57, 3.85 | 8" + 2.5 TURNS | 7" + 5.5 TURNS | 4" | 6" |
| A.C. 200 | 5.33 | 5.11-5.30, 5.31-5.50 | 4.00 | 4.00, 4.275 | 3.57, 3.85 | 8" + 3.75 TURNS | 7" + 7 TURNS | 4" | 6" |
| A.C. 150 CAPCO | 5.32 | 5.11-5.30, 5.31-5.50 | 4.00 | 4.00, 4.275 | 3.57, 3.85 | 8" + 3.75 TURNS | 7" + 7 TURNS | 4" | 6" |
| A.C. 200 CAPCO | 5.40 | 5.11-5.30, 5.31-5.50 | 4.00 | 4.00, 4.275 | 3.57, 3.85 | 8" + 4.5 TURNS | 7" + 8 TURNS | 4" | 6" |
| SDR 26 (160) | 4.50 | 4.48-4.55 | 4.15 | 4.275 | 3.85 | 7" + 10.25 TURNS | 6" + 10.25 TURNS | 4" | 6" |
| SDR 21 (200) | 4.50 | 4.48-4.55 | 4.07 | 4.00, 4.275 | 3.57, 3.85 | 7" + 10.25 TURNS | 6" + 10.25 TURNS | 4" | 6" |
| PVC SCHEDULE 80 | 4.50 | 4.48-4.55 | 3.83 | 4.00, 4.275 | 3.57, 3.85 | 7" + 10.25 TURNS | 6" + 10.25 TURNS | 4" | 6" |
| PVC SCHEDULE 40 | 4.50 | 4.48-4.55 | 4.03 | 4.00, 4.275 | 3.57, 3.85 | 7" + 10.25 TURNS | 6" + 10.25 TURNS | 4" | 6" |

6" SIZE

| PIPE TYPE | O.D. NOM | SLEEVE SIZE | PIPE I.D. | CUTTER(S) | CUTTER I.D. | CUTTER TRAVEL | REAMER TRAVEL | VALVE ROTATE | VALVE SET |
|---------------------------|----------|----------------------|-----------|-------------------|-----------------|-------------------|-------------------|--------------|-----------|
| PC 350, D.I. 50 | 6.90 | 6.80-7.00 | 6.34 | 6.325 | 5.90 | 10" + 9 TURNS | 11" + 9 TURNS | 4" | 6" |
| D.I. 51 | 6.90 | 6.80-7.00 | 6.28 | 6.325 | 5.90 | 10" + 9 TURNS | 11" + 9 TURNS | 4" | 6" |
| D.I. 52 | 6.90 | 6.80-7.00 | 6.22 | 6.325 | 5.90 | 10" + 9 TURNS | 11" + 9 TURNS | 4" | 6" |
| D.I. 53 | 6.90 | 6.80-7.00 | 6.16 | 6.325 | 5.90 | 10" + 9 TURNS | 11" + 9 TURNS | 4" | 6" |
| D.I. 54 | 6.90 | 6.80-7.00 | 6.10 | 6.325 | 5.90 | 10" + 9 TURNS | 11" + 9 TURNS | 4" | 6" |
| D.I. 55 | 6.90 | 6.80-7.00 | 6.04 | 6.325 | 5.90 | 10" + 9 TURNS | 11" + 9 TURNS | 4" | 6" |
| D.I. 56 | 6.90 | 6.80-7.00 | 5.98 | 6.00, 6.325 | 5.57, 5.90 | 10" + 9 TURNS | 11" + 9 TURNS | 4" | 6" |
| C900 PC165 (DR25, PC100) | 6.90 | 6.80-7.00 | 6.27 | 6.325 | 5.90 | 10" + 9 TURNS | 11" + 9 TURNS | 4" | 6" |
| C900 PC235 (DR18, PC150) | 6.90 | 6.80-7.00 | 6.03 | 6.325 | 5.90 | 10" + 9 TURNS | 11" + 9 TURNS | 4" | 6" |
| C900 PC305 (DR14, PC 200) | 6.90 | 6.80-7.00 | 5.79 | 6.00, 6.325 | 5.57, 5.90 | 10" + 9 TURNS | 11" + 9 TURNS | 4" | 6" |
| C.I. A | 6.90 | 6.80-7.00 | 5.96 | 6.00, 6.325 | 5.57, 5.90 | 10" + 9 TURNS | 11" + 9 TURNS | 4" | 6" |
| C.I. B | 7.10 | 7.01-7.20 | 6.08 | 6.325 | 5.90 | 10" + 10.25 TURNS | 11" + 10.25 TURNS | 4" | 6" |
| C.I. C | 7.10 | 7.01-7.20 | 6.02 | 6.325 | 5.90 | 10" + 10.25 TURNS | 11" + 10.25 TURNS | 4" | 6" |
| C.I. D | 7.10 | 7.01-7.20 | 5.94 | 6.00, 6.325 | 5.57, 5.90 | 10" + 10.25 TURNS | 11" + 10.25 TURNS | 4" | 6" |
| A.C. 100 | 7.19 | 7.01-7.20, 7.21-7.40 | 6.00 | 6.00, 6.325 | 5.57, 5.90 | 10" + 10.75 TURNS | 11" + 10.25 TURNS | 4" | 6" |
| A.C. 150 | 7.17 | 7.01-7.20, 7.21-7.40 | 5.85 | 6.00, 6.325 | 5.57, 5.90 | 10" + 10.75 TURNS | 11" + 10.25 TURNS | 4" | 6" |
| A.C. 200 | 7.32 | 7.21-7.40, 7.41-7.60 | 5.70 | 5.50, 6.00, 6.325 | 5.1, 5.57, 5.90 | 10" + 10.5 TURNS | 11" + 10.5 TURNS | 4" | 6" |
| SDR 26 (160) | 6.63 | 6.61 - 6.68 | 6.12 | 6.00, 6.325 | 5.57, 5.90 | 10" + 6 TURNS | 11" + 6.5 TURNS | 4" | 6" |
| SDR 21 (200) | 6.63 | 6.61 - 6.68 | 5.99 | 6.00, 6.325 | 5.57, 5.90 | 10" + 6 TURNS | 11" + 6.5 TURNS | 4" | 6" |
| PVC SCHEDULE 80 | 6.63 | 6.61 - 6.68 | 5.76 | 5.50, 6.00, 6.325 | 5.1, 5.57, 5.90 | 10" + 6 TURNS | 11" + 6.5 TURNS | 4" | 6" |
| PVC SCHEDULE 40 | 6.63 | 6.61 - 6.68 | 6.07 | 6.00, 6.325 | 5.57, 5.90 | 10" + 6 TURNS | 11" + 6.5 TURNS | 4" | 6" |

QuikValve™ TRAVEL CHART

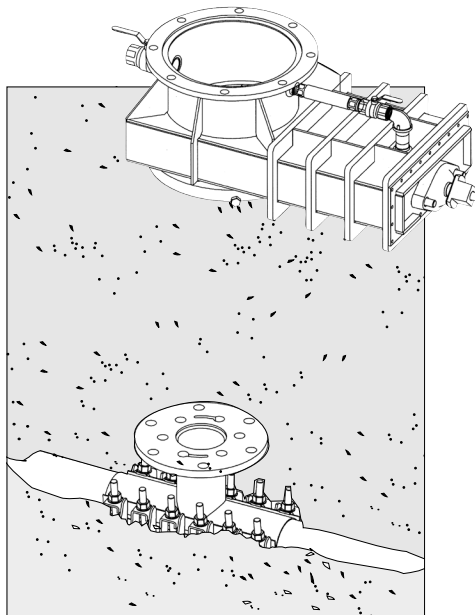
8" SIZE



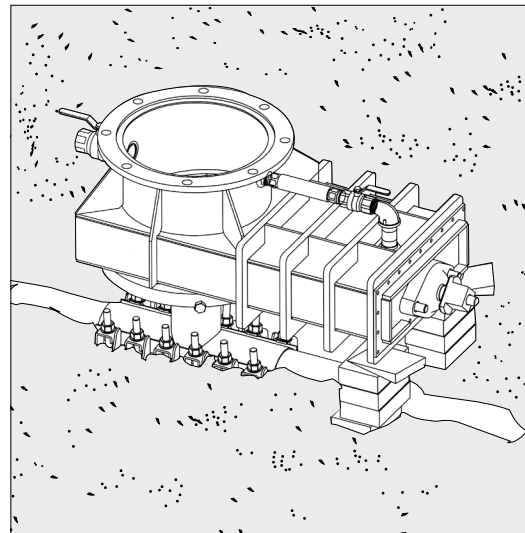
| PIPE TYPE | O.D. NOM | SLEEVE SIZE | PIPE I.D. | CUTTER(S) | CUTTER I.D. | CUTTER TRAVEL (6.13 OAL) | CUTTER TRAVEL (6.75 OAL) | REAMER TRAVEL | VALVE ROTATE | VALVE SET |
|---------------------------|----------|----------------------|-----------|-------------------|------------------|--------------------------|--------------------------|------------------|----------------|----------------|
| PC 350, D.I. 50 | 9.05 | 8.95-9.15 | 8.45 | 8.425 | 8.00 | 12" + 4.5 TURNS | 11" + 9 TURNS | 11" + 9 TURNS | 3" + 3.5 TURNS | 5" + 3.5 TURNS |
| D.I. 51 | 9.05 | 8.95-9.15 | 8.39 | 8.425 | 8.00 | 12" + 4.5 TURNS | 11" + 9 TURNS | 11" + 9 TURNS | 3" + 3.5 TURNS | 5" + 3.5 TURNS |
| D.I. 52 | 9.05 | 8.95-9.15 | 8.33 | 8.425 | 8.00 | 12" + 4.5 TURNS | 11" + 9 TURNS | 11" + 9 TURNS | 3" + 3.5 TURNS | 5" + 3.5 TURNS |
| D.I. 53 | 9.05 | 8.95-9.15 | 8.27 | 8.425 | 8.00 | 12" + 4.5 TURNS | 11" + 9 TURNS | 11" + 9 TURNS | 3" + 3.5 TURNS | 5" + 3.5 TURNS |
| D.I. 54 | 9.05 | 8.95-9.15 | 8.21 | 8.425 | 8.00 | 12" + 4.5 TURNS | 11" + 9 TURNS | 11" + 9 TURNS | 3" + 3.5 TURNS | 5" + 3.5 TURNS |
| D.I. 55 | 9.05 | 8.95-9.15 | 8.15 | 8.425 | 8.00 | 12" + 4.5 TURNS | 11" + 9 TURNS | 11" + 9 TURNS | 3" + 3.5 TURNS | 5" + 3.5 TURNS |
| D.I. 56 | 9.05 | 8.95-9.15 | 8.09 | 8.00, 8.425 | 7.60, 8.00 | 12" + 4.5 TURNS | 11" + 9 TURNS | 11" + 9 TURNS | 3" + 3.5 TURNS | 5" + 3.5 TURNS |
| C900 PC165 (DR25, PC100) | 9.05 | 8.95-9.15 | 8.23 | 8.425 | 8.00 | 12" + 4.5 TURNS | 11" + 9 TURNS | 11" + 9 TURNS | 3" + 3.5 TURNS | 5" + 3.5 TURNS |
| C900 PC235 (DR18, PC150) | 9.05 | 8.95-9.15 | 7.91 | 8.00, 8.425 | 7.60, 8.00 | 12" + 4.5 TURNS | 11" + 9 TURNS | 11" + 9 TURNS | 3" + 3.5 TURNS | 5" + 3.5 TURNS |
| C900 PC305 (DR14, PC 200) | 9.05 | 8.95-9.15 | 7.59 | 7.50, 8.00, 8.425 | 7.10, 7.60, 8.00 | 12" + 4.5 TURNS | 11" + 9 TURNS | 11" + 9 TURNS | 3" + 3.5 TURNS | 5" + 3.5 TURNS |
| C.I. A | 9.05 | 8.95-9.15 | 8.07 | 8.00, 8.425 | 7.60, 8.00 | 12" + 4.5 TURNS | 11" + 9 TURNS | 11" + 9 TURNS | 3" + 3.5 TURNS | 5" + 3.5 TURNS |
| C.I. B | 9.05 | 8.95-9.15 | 7.97 | 8.00, 8.425 | 7.60, 8.00 | 12" + 4.5 TURNS | 11" + 9 TURNS | 11" + 9 TURNS | 3" + 3.5 TURNS | 5" + 3.5 TURNS |
| C.I. C | 9.30 | 9.16-9.35, 9.36-9.55 | 8.12 | 8.425 | 8.00 | 12" + 6 TURNS | 11" + 10.5 TURNS | 11" + 10.5 TURNS | 3" + 3.5 TURNS | 5" + 3.5 TURNS |
| C.I. D | 9.30 | 9.16-9.35, 9.36-9.55 | 8.04 | 8.00, 8.425 | 7.60, 8.00 | 12" + 6 TURNS | 11" + 10.5 TURNS | 11" + 10.5 TURNS | 3" + 3.5 TURNS | 5" + 3.5 TURNS |
| A.C. 100 | 9.39 | 9.16-9.35, 9.36-9.55 | 8.00 | 8.00, 8.425 | 7.60, 8.00 | 12" + 6.5 TURNS | 11" + 11 TURNS | 11" + 11 TURNS | 3" + 3.5 TURNS | 5" + 3.5 TURNS |
| A.C. 150 | 9.37 | 9.16-9.35, 9.36-9.55 | 7.85 | 8.00, 8.425 | 7.60, 8.00 | 12" + 6.5 TURNS | 11" + 11 TURNS | 11" + 11 TURNS | 3" + 3.5 TURNS | 5" + 3.5 TURNS |
| A.C. 200 | 9.50 | 9.36-9.55, 9.56-9.75 | 7.60 | 7.50, 8.00, 8.425 | 7.10, 7.60, 8.00 | 12" + 6.5 TURNS | 11" + 11 TURNS | 11" + 11 TURNS | 3" + 3.5 TURNS | 5" + 3.5 TURNS |
| SDR 26 (160) | 8.63 | 8.61-8.68 | 7.96 | 8.00, 8.425 | 7.60, 8.00 | 11" + 11.5 TURNS | 11" + 4 TURNS | 11" + 4 TURNS | 3" + 3.5 TURNS | 5" + 3.5 TURNS |
| SDR 21 (200) | 8.63 | 8.61-8.68 | 7.81 | 7.50, 8.00, 8.425 | 7.10, 7.60, 8.00 | 11" + 11.5 TURNS | 11" + 4 TURNS | 11" + 4 TURNS | 3" + 3.5 TURNS | 5" + 3.5 TURNS |
| PVC SCHEDULE 80 | 8.63 | 8.61-8.68 | 7.63 | 7.50, 8.00, 8.425 | 7.10, 7.60, 8.00 | 11" + 11.5 TURNS | 11" + 4 TURNS | 11" + 4 TURNS | 3" + 3.5 TURNS | 5" + 3.5 TURNS |
| PVC SCHEDULE 40 | 8.63 | 8.61-8.68 | 7.98 | 8.00, 8.425 | 7.60, 8.00 | 11" + 11.5 TURNS | 11" + 4 TURNS | 11" + 4 TURNS | 3" + 3.5 TURNS | 5" + 3.5 TURNS |

NOTES:

1. When more than one cutter is listed above, start with smallest and work up to largest.
2. When not certain of the pipe class, start with smallest cutter in that type.



BED PIPE AND SLEEVE. PRIOR TO INSTALLING SLIDE GATE



ONCE SLIDE GATE IS SECURED TO THE FLANGE - BLOCK SLIDE GATE FOR EXTRA STABILITY.